

# TENAJ WASTE RECEPTACLE

Model Number : TJTR-24

Wishbone  
site furnishings

## PRODUCT SPECIFICATIONS

10 YEAR LIMITED WARRANTY

Durable Powder Coated Cast Aluminum Frame

Standard Colours: Brown Slate, Victor Ridge II, Nordic Lichen, Timeless Rust, Grey Gold, Textured Silver, Precious Sand, Groovy Red, Black Textured, Earth Clay, Noble Bronze, Modern Khaki

Pull Forward Locking Front Door

Heavy Duty Aluminum Liner Secured to the Loading Door

## CUSTOMIZED SOLUTIONS

Custom Powder Coating  
(Setup Charges May Apply)

Bottle and Can Recycler

Urban Cigarette Receptacle

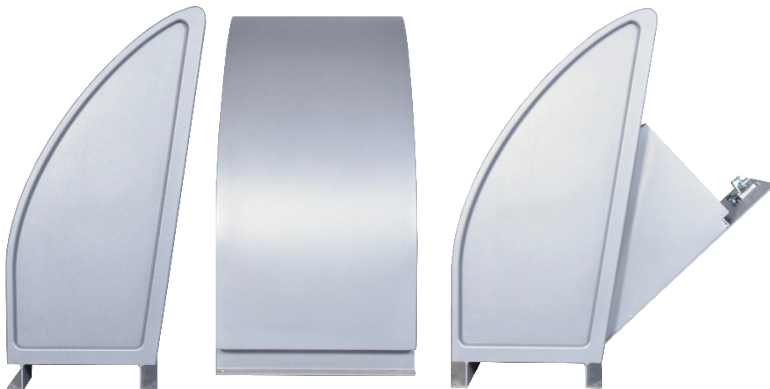
INST-1 Stainless steel bolt down kit

## PRODUCT DIMENSIONS

Total Height	44 inches / 1118mm
Width	23.5 inches / 597mm
Depth	26 inches / 660mm
Capacity	24 US gal / 94 L
Weight	115lbs / 52 kg

## RECYCLED CONTENT

**80% RECYCLED CONTENT BY WEIGHT**  
**100% RECYCLABLE**



## DESIGNER NOTES

The TENAJ waste receptacle was created to compliment our very popular TENAJ park benches and bike racks. The futuristic curved design captures the same look and feel of the series but does not compromise the functionality of the receptacle. The front loading door was the challenge and our design team as always came up with a very innovative solution. Rather than have the loading door hinges on the side, they were placed on the bottom allowing the door to pull forward. The liner was then mounted on the door. As it opens it also shifts the waste forward making it easier to remove and replace the garbage bag. The front-facing overhang of the unit deflects water and makes it difficult for animals and birds to access the inside. This waste receptacle has a relatively small foot print making it ideal areas with space constraints.



100% Canadian Made



Wishbone Ltd. provides an extended 10 year limited warranty from the date of invoice.



Visit us online at [www.Wishboneltd.com](http://www.Wishboneltd.com)

Wishbone Site Furnishings | #210-27090 Gloucester Way | Langley, BC CANADA V4W 3Y5  
1.866.626.0476 sales@wishboneltd.com