

Classic Bench

Model Number

CB-6 (6 ft)
CB-5 (5 ft)



From the curved arm rests to the rolling seat and chair back, this classic design is well recognized and immediately familiar. Redesigned to accommodate recycled plastic lumber, this bench addresses the maintenance issues so commonly associated with traditional wood construction. Exceedingly beautiful and comfortable with a hint of nostalgia, this classic bench is available with or without armrests.

Material Specifications

Marine Grade Aluminum Frame
Stainless Steel Hardware
Super Durable Powder Coating
100% Recycled Plastic Slats
Western Red Cedar
Accoya Modified Pine
Hardened Bamboo

Customized Solutions

Custom Powder Coating
(Setup Charges May Apply)
Available without arms
Center Arm
4 ft and 6 ft Lengths
Skate blocks
INST-1.5 Stainless Steel Bolt-Down Kit

Recycled Content

Recycled Content by Weight: 90%
100% Recyclable

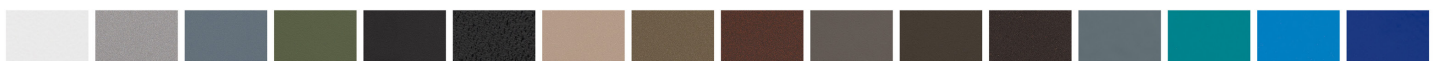
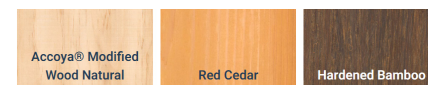
Product Dimensions

Total Height: 29.5 inches / 75 cm
Total Depth: 19.5 inches / 50 cm
Seat Height: 16 inches / 41 cm
Seat Depth: 16 inches / 41 cm
Length: 60.5 inches / 183 cm
Weight: 170 lbs / 77.5 kg

100% Recycled Plastic Lumber Colours



Unstained Natural Wood Alternatives



OVER 30 POWDER COATING COLOURS *Premium powder colours incur a surcharge per item



Wishbone
site furnishings

#210-27090 Gloucester Way | Langley, BC CANADA V4W 3Y5
1.866.626.0476 sales@wishboneltd.com